

Zorro-Flow®

Quick Reference Guide



Intended Use

Zorro-Flow is a single use product intended for urine collection for up to 24 hours.

Components

Sterile Device Pouch Contents:

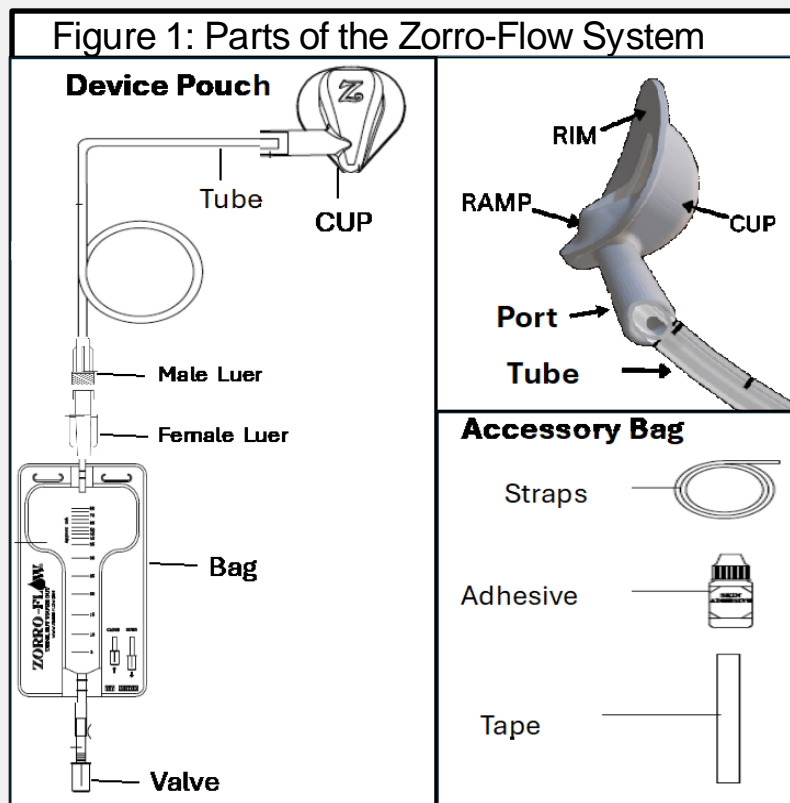
- Cup
 - Ramp holds urine from leaking
 - Rim is contact area for adhesive
 - Port is where the tube connects
- Tube, Luers, and Urine Collection Bag

Non-Sterile Accessory Bag:

Contains adhesive, tape, and straps

Other Materials (NOT Supplied)

- Disposable diaper and diaper wipes
- Alcohol wipes
- Silicone adhesive removal pads (i.e. Uni-solve)
- Aseptic cleaner (if sterile technique required)



Patient Types

- Strict Ins and Outs
- Urinalysis
- Fluid Overload
- UOP assessment during or after surgery
- Eliminate CAUTI risk from indwelling catheter
- Edema
- Low Urine Output
- Sepsis / fever

Sizing Chart

Catalog #	Width	Length
ZF-F-XS	2.4 cm	2.8 cm
ZF-F-S	3.2 cm	3.7 cm
ZF-F-M	4.1 cm	4.7 cm
ZF-F-L	5.1 cm	5.9 cm
Approximate size		

Contact Us
info@zorro-flow.com
 205-377-0703



Patient Evaluation and Preparation

Step 1: Evaluate skin around public area

If the skin is discolored, has poor skin integrity or is abnormally swollen, do not use.

Step 2: If sterile technique is desired, keep the following in mind

- Open and set up all materials following institution's sterile technique.
- Clean patient with an antiseptic product that will not damage the skin (not supplied).
- Keep one hand sterile to place the cup, while the other can be used to open and apply the adhesive and hold the patient.
- When handling the adhesive, be careful not to touch the bottle tip.
- False positives cannot be guaranteed.
- Wipe the drain valve with an alcohol pad prior to sample collection.

Step 3: Preparation for application

- Open the sterile bag, accessory bag, and device pouch and identify components

Step 4: Apply small amount of adhesive around rim of the cup (Figure 2)

- Use enough adhesive to cover the rim but not so much that it spills over.
- Do not place adhesive directly on patient.
- Let adhesive dry for 3-5 minutes before applying.

Step 5: Clean area with disposable wipes and change diaper

- Failure to change a wet diaper will limit ability to assess urine leakage.

Figure 2 Apply Adhesive Around the Inside Rim of the Urine Collection Device Cup



Device Placement and Securement

Step 6: Place the cup on perineum

- Carefully place cup starting with the ramp placed at the lowest part of vaginal opening (Figure 3).
- Remember to wait 3-5 minutes for adhesive to dry or it will not be sticky.
- Press firmly for 30–60 seconds to secure the cup to the patient skin.

Step 7: Secure cup to the patient with the tape strips (Figure 4)

- Depending on the patient size, tape strip may be cut to fit the length (from waist to back of the thigh).
- Peel and discard blue liner.
- Secure the first strip to the pelvis/abdomen over the cup and behind thigh on the opposite side.
- Repeat previous steps with second tape strip in a crisscross pattern (Figure 4).

Step 8: Secure the urine collection bag and tubing:

- Ensure tubing and bag are below the level of the bladder.
- Secure the bag with provided straps to the side of crib/bed/isolette.
- Ensure that at least 6 cm of strap overlaps
- Ensure slack on tubing so that cup will not be pulled off when bag gets full.
- **NEVER LET THE BAG OVERFILL**
- Pull Down on valve to OPEN position to drain urine (Figure 5).

Figure 3: Place Ramp on Lowest Part

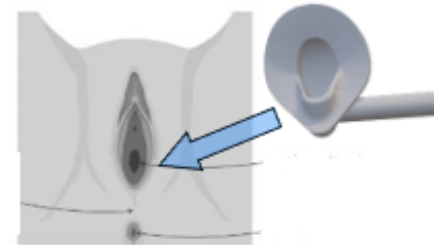


Figure 4: Secure Tape Strips

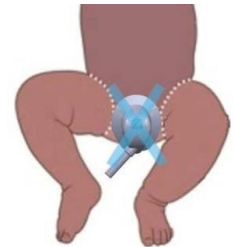


Figure 5: Pull DOWN to OPEN; Push UP to CLOSE



Device Removal

- Remove cup and tape using silicone-based adhesive removal (not supplied)
- Do not peel device off patient as this may tear the skin.
- Gently separate the edge of cup from skin by applying adhesive remover.
- Continue until it can be easily removed.
- Never pull device with force as this could cause skin damage or irritation.